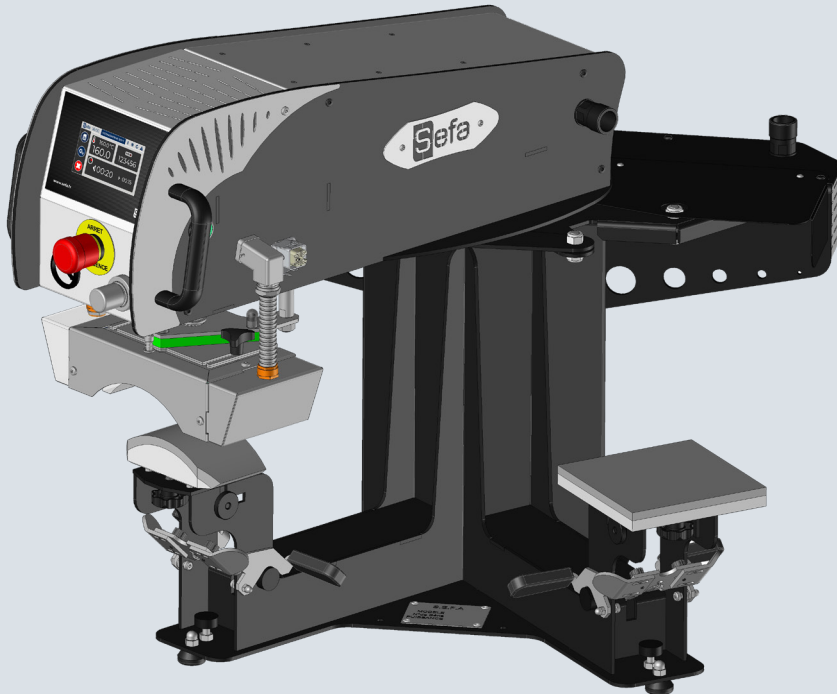




Foot pedal



- Perfect heat & pressure distribution
- Double plate for cap or logo 16x16cm (plates sold separately)
- Robust frame
- Important height between plates
- User friendly
- Bi-manual control (+ foot pedal control)
- New SmartTouch® interface
- Automatic translation from one plate to another
- Suitable for laser transfer applications & pretreatment drying
- Ideal for high production
- Manufactured in France
- 2-year guarantee on the machine
- 10-year guarantee on heating elements



Set programs



Pneumatic



Fast heat up

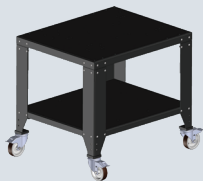


Pre-heat time



SmartTouch® Controller

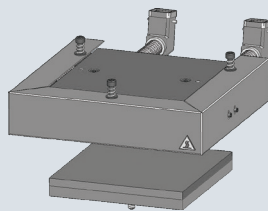
OPTIONAL ACCESSORIES



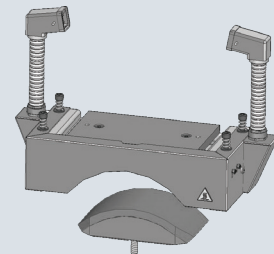
Support table



Compressor



Flat logo accessory
(1 heating plate + 2 lower plates). Not included



Cap accessory
(1 heating plate + 2 lower plates). Not included

Email

sales@sefa.fr
support@sefa.fr
www.sefa.fr



Phone

Office : + 33 4 68 74 05 89
Fax : + 33 4 68 74 24 08



Address

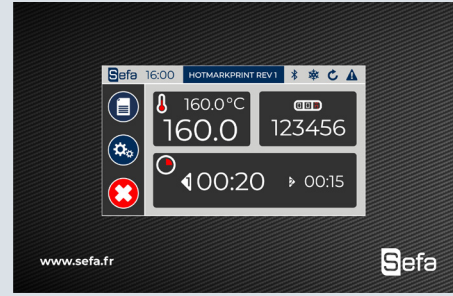
SEFA SAS
Z.I. PASTABRAC
11 260 ESPERAZA (FR)



TECHNICAL CHARACTERISTICS

Type	Pneumatic
Operation	Swing - Rotating plate
Platen size	Logo 16x16 cm (sold separately) Cap 18x8 cm (sold separately)
Max thickness	36 mm
Weight	62 Kg / 137 lb
Pressure	993 g/cm ²
°C / °F Max	220 °C / 429 °F
Power	600 W
Power supply	240 V Single-phase
Amperage	3 A
Applications	Flex, direct-to-garment, pre-treatment, sublimation on rigid substrate, textile sublimation, laser transfer, screen printing
Dimensions	625x646x941 mm 24x25x37"

SETTINGS



New **SmartTouch®** controller developed by Sefa

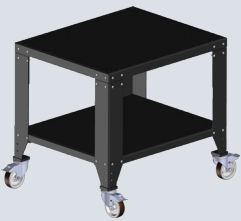
Recipes menu with adaptive regulation parameters depending on the job: flex, sublimation on textile, sublimation on rigid substrates, DTG...

Advanced electronics

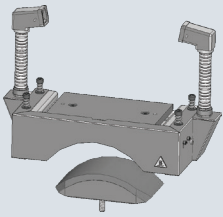
- Fully editable recipes menus
- Independent time for each plate
- Multi timer (up to 4 different times)
- Cycles counters
- Stop cycle function
- ECO GREEN mode

From 0 to 600 s (precision +/- 1%).
From 15 to 220°C (precision +/- 1%).
Heating time to reach 180°C : 5 min.

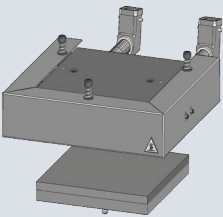
OPTIONAL ACCESSORIES



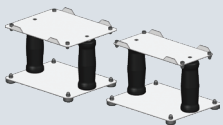
TAB-98 PRO / R
Support table (optional castors available).



ACC-CAP DUPLEX MINI PRO
Cap plate size 18x8 cm for Duplex Mini (1 heating plate and 2 lower plates).



ACC-PLA DUPLEX MINI PRO
Logo plate size 16x16 cm for Duplex Mini (1 heating plate and 2 lower plates).

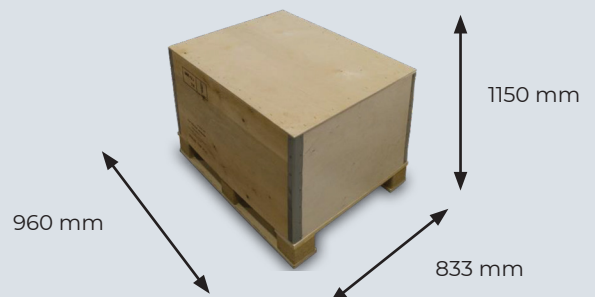
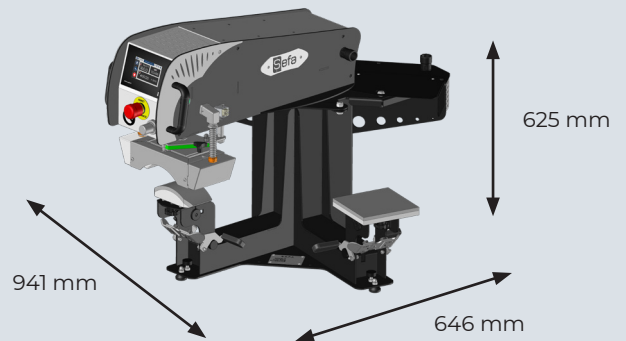


SPECIAL TOOL
Handles to manipulate and hot-swap the elements with safety guaranteed.



COMP-74
Silent compressor 42dB 50L.
74 L/min.

DIMENSIONS



Box weight CAI-100 : 25 kg